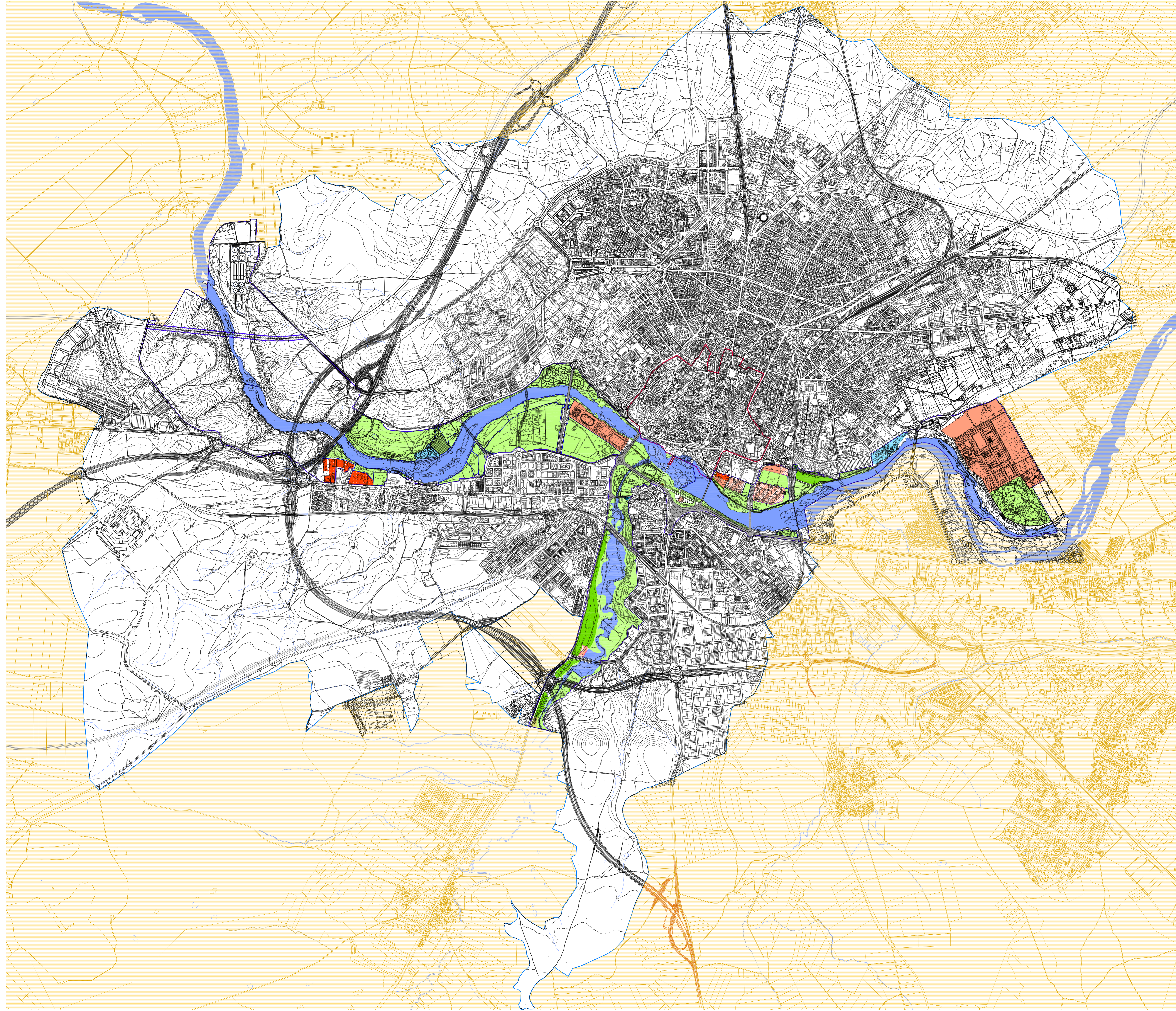
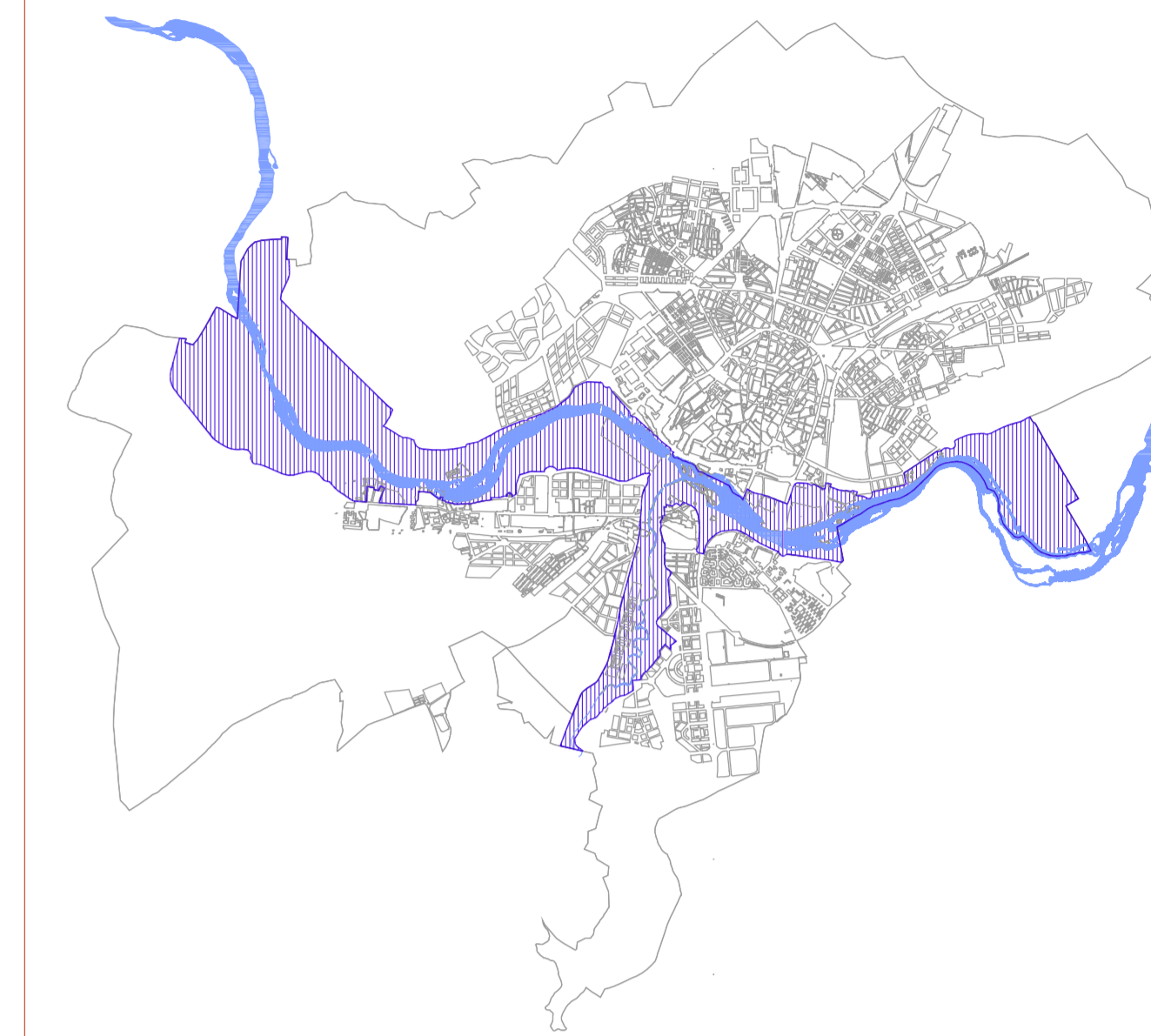






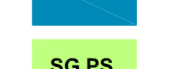









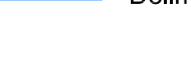


**APROBACIÓN DEFINITIVA
PLAN ESPECIAL DE PROTECCIÓN DEL
RÍO TORMES Y ARROYO DEL ZURGUÉN
SALAMANCA**

Documento: Planos de Información
Plano: Calificación de Suelo

Escala: 1: 10.000
Noviembre 2010



-  Sistema General de Equipamiento
 -  Sistema General de Equipamiento, Transporte
 -  Sistema General de Equipamiento, Infraestructuras Ferroviarias
 -  Sistema General de Vías Públicas
 -  Trazado AVE
 -  Sistema General de Servicios Urbanos
 -  Sistema Local de Servicios Urbanos
 -  Sistema General de Espacios Libres Públicos, Parque Supracanal
 -  Sistema Local de Espacios Libres Públicos
 -  Suelo Rústico
 -  Manzana Compacta Extensiva
 -  Sistema Local de Equipamiento Privado
 -  Sistema Local de Equipamiento Público
 -  Zona Edificable
-
-  Delimitación del Plan Especial de Protección de las Riberas del Tormes y Zurguén
 -  Delimitación del Plan Especial de Protección del C.H.
 -  Delimitación del Término Municipal